



CENTRAL
GRAPHICS inc.

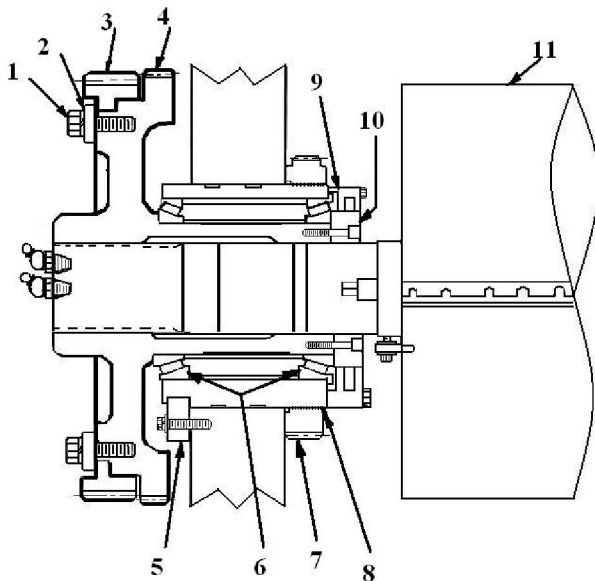
1-630-759-1696

FAX 1-630-759-1792
Toll Free 1-800-284-7737

1302 ENTERPRISE DRIVE, ROMEOVILLE, ILLINOIS 60446

10 Plate Cylinder Drive Side

1000 - series



CGI 7-1

Bolt Slip

CGI 7-2

Slip Washer

CGI 7-3

Slip Gear 14 1/2

CGI 7-4

Gear Hub 14 1/2

CGI 7-5

Iron Lug

CGI 7-6

Pre 1000 Timken BRG

CGI 7-7

Circumferential Gear

CGI 7-8

Eccentric Sleeve

CGI 7-9

Oil Return Ring

CGI 7-10

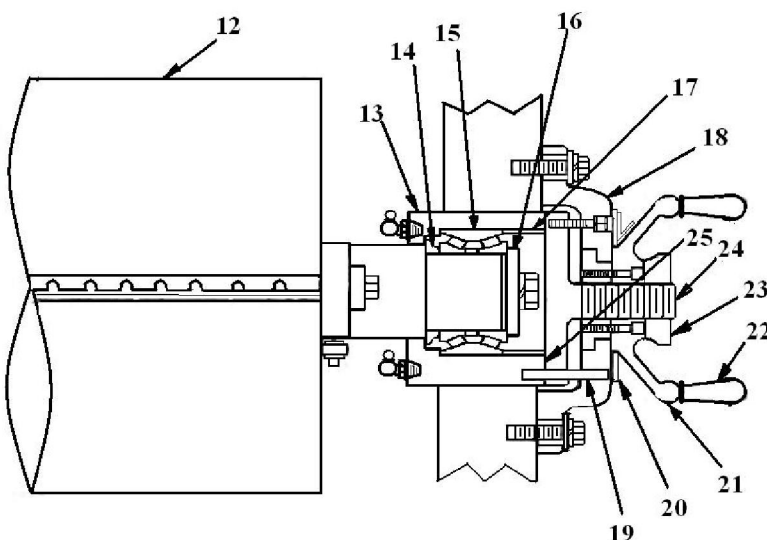
Retainer End Plate

CGI 7-11

Plate Cylinder

#10 Cylinder Operating Side

1000 - series



CGI 7-12

Plate Lockup Assembly

CGI 7-13

Eccentric Sleeve

CGI 7-14

Spacer

CGI 7-15

Timken BRG

CGI 7-16

End Washer

CGI 7-17

Spacer

CGI 7-18

Sidelay Housing

CGI 7-19

Side lay Pin

CGI 7-20

Hand Wheel Hub

CGI 7-21

Hand Wheel

CGI 7-22

Hand Wheel Pin

CGI 7-23

Side lay Lock knob

CGI 7-24

Side lay Spindle

CGI 7-25

Shim Set

We Grind New Cylinders - Keep yours in, then send us your old ones



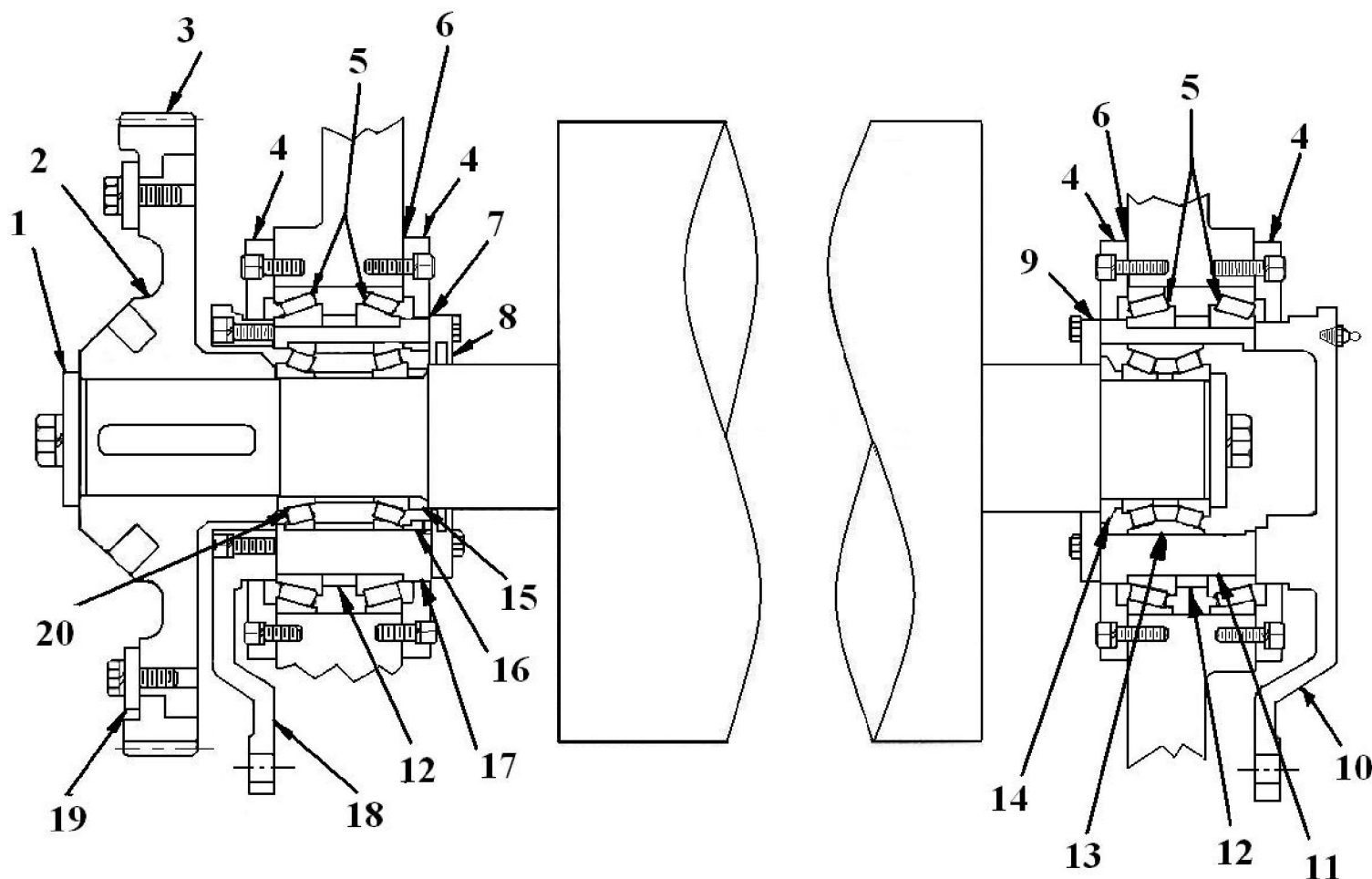
CENTRAL
GRAPHICS inc.

1-630-759-1696

FAX 1-630-759-1792
Toll Free 1-800-284-7737

1302 ENTERPRISE DRIVE, ROMEOVILLE, ILLINOIS 60446

11 & 12 Blanket Cylinders



CGI 10-1	End Washer
CGI 10-2	Hub
CGI 10-3a	Gear
CGI 10-3b	Gear
CGI 10-4	Retainer Ring
CGI 10-5	Timken Cone*
CGI 10-6	Bearing Spacer*
CGI 10-7	Timken Cup
CGI 10-8	Spacer
CGI 10-9	Retainer Plate
CGI 10-10	Timken Bearing Assem.
CGI 10-11	Retainer Ring
CGI 10-12	Slip Washer

CGI 10-13a	Eccentric Throw Lever
CGI 10-13b	Eccentric Throw Lever
CGI 10-14	Timken Cup
CGI 10-15	Spacer
CGI 10-16	Timken Cone
CGI 10-17	Eccentric Sleeve
CGI 10-18	oil Return Spacer
CGI 10-19a	Oil Return Cap
CGI 10-19b	Oil Return Cap
CGI 10-20	Spacer
CGI 10-21	Retainer Ring
CGI 10-22a	Eccentric Throw Lever
CGI 10-22b	Eccentric Throw Lever



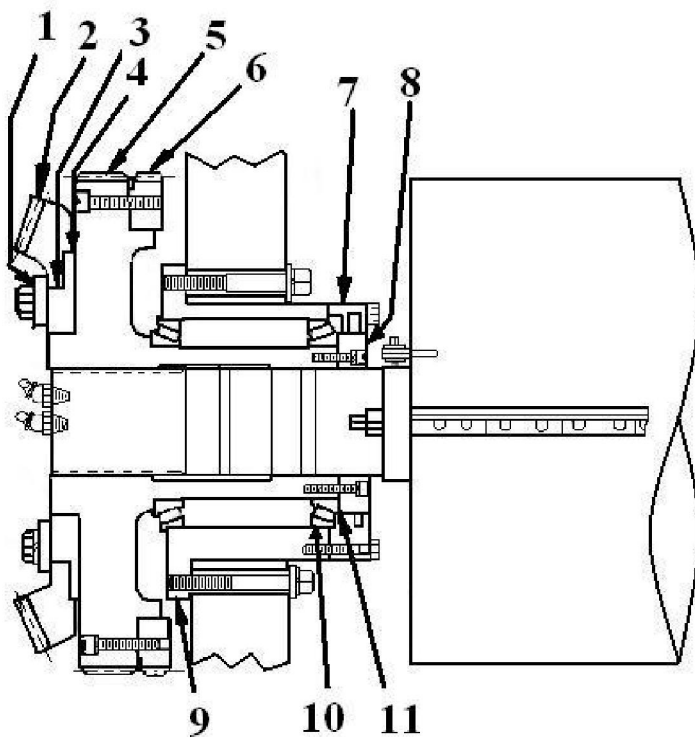
**CENTRAL
GRAPHICS inc.**

1-630-759-1696

**FAX 1-630-759-1792
Toll Free 1-800-284-7737**

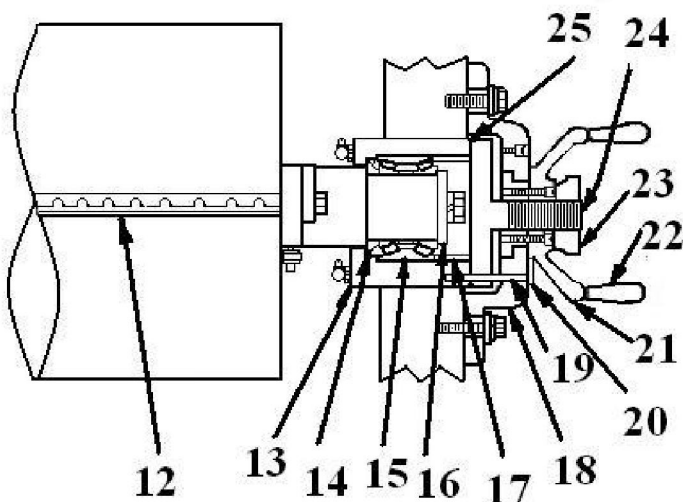
1302 ENTERPRISE DRIVE, ROMEOVILLE, ILLINOIS 60446

#13 Cylinder Drive Side



- | | |
|----------|-------------------------|
| CGI 8-1 | Slip Washer |
| CGI 8-2 | Ring Gear |
| CGI 8-3 | Slip Hub |
| CGI 8-4 | Shim |
| CGI 8-5 | #13 Hub Gear |
| CGI 8-6 | Idle Drive Gear |
| CGI 8-7 | Oil Return Cap |
| CGI 8-8 | BRG Retainer Cap |
| CGI 8-9 | Eccentric |
| CGI 8-10 | Timken BRG |
| CGI 8-11 | Shim |

13 Cylinder Operating Side



- | | |
|----------|------------------------------|
| CGI 8-12 | Plate Lockup Assembly |
| CGI 8-13 | Eccentric Sleeve |
| CGI 8-14 | Spacer |
| CGI 8-15 | Timken BRG |
| CGI 8-16 | End Washer |
| CGI 8-17 | Spacer |
| CGI 8-18 | Sidelay Housing |
| CGI 8-19 | Sidelay Pin |
| CGI 8-20 | Hand Wheel Hub |
| CGI 8-21 | Hand Wheel |
| CGI 8-22 | Hand Wheel Pin |
| CGI 8-23 | Sidelay Lockknob |
| CGI 8-24 | Sidelay Spindle |
| CGI 8-25 | Shim Set |

We Grind New Cylinders - Keep yours in, then send us your old ones



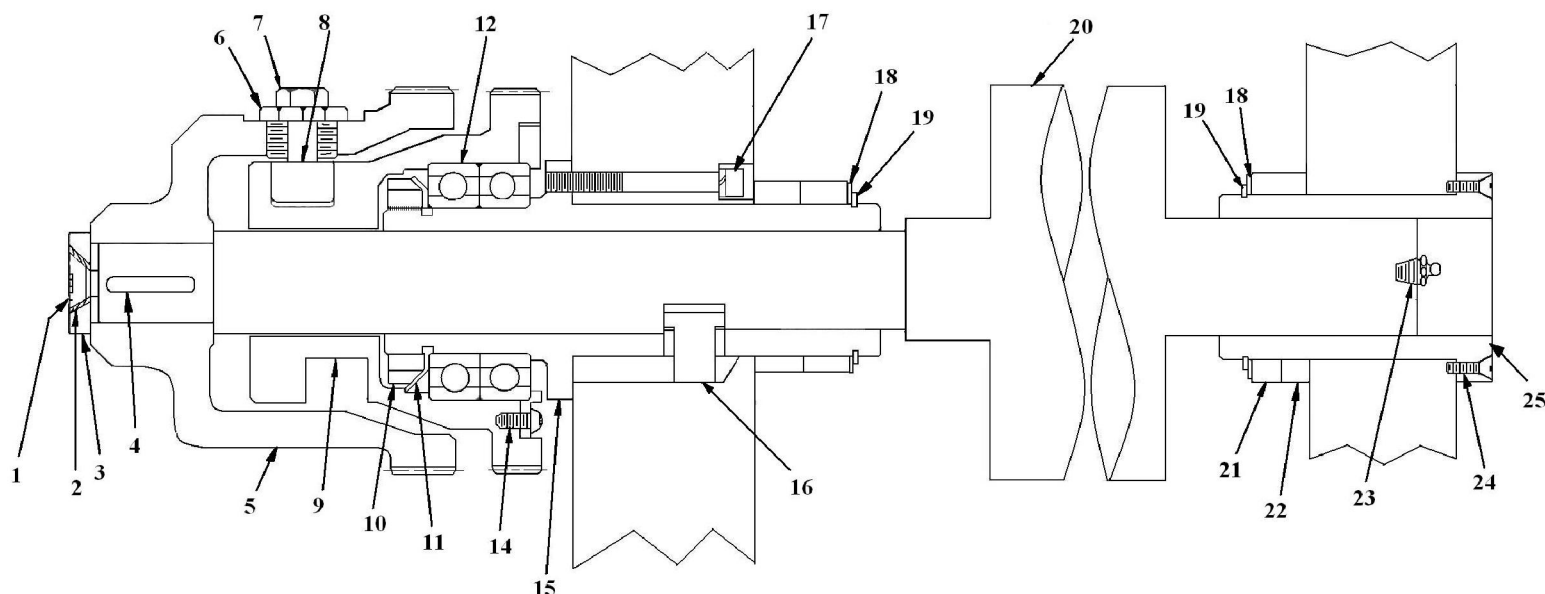
**CENTRAL
GRAPHICS inc.**

1-630-759-1696

**FAX 1-630-759-1792
Toll Free 1-800-284-7737**

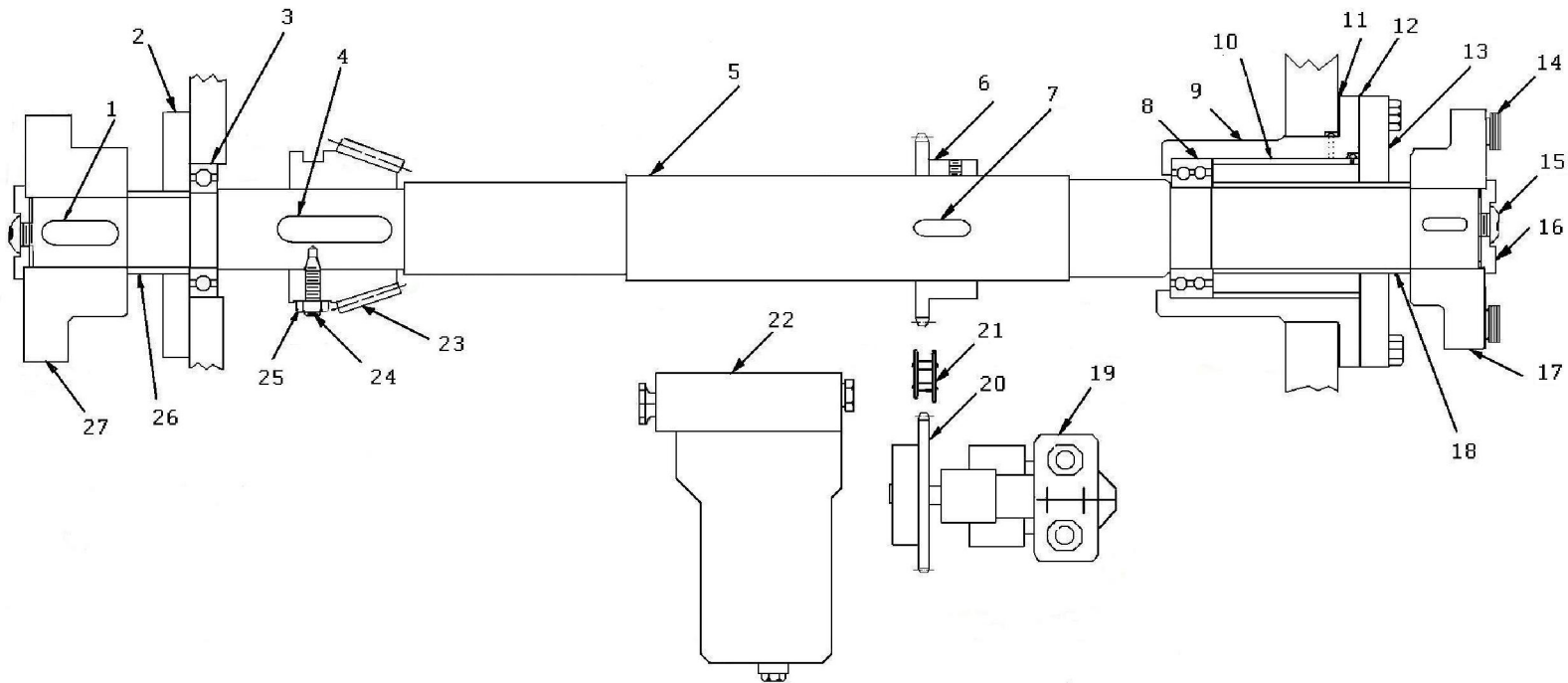
1302 ENTERPRISE DRIVE, ROMEOVILLE, ILLINOIS 60446

Water Vibrator Roller



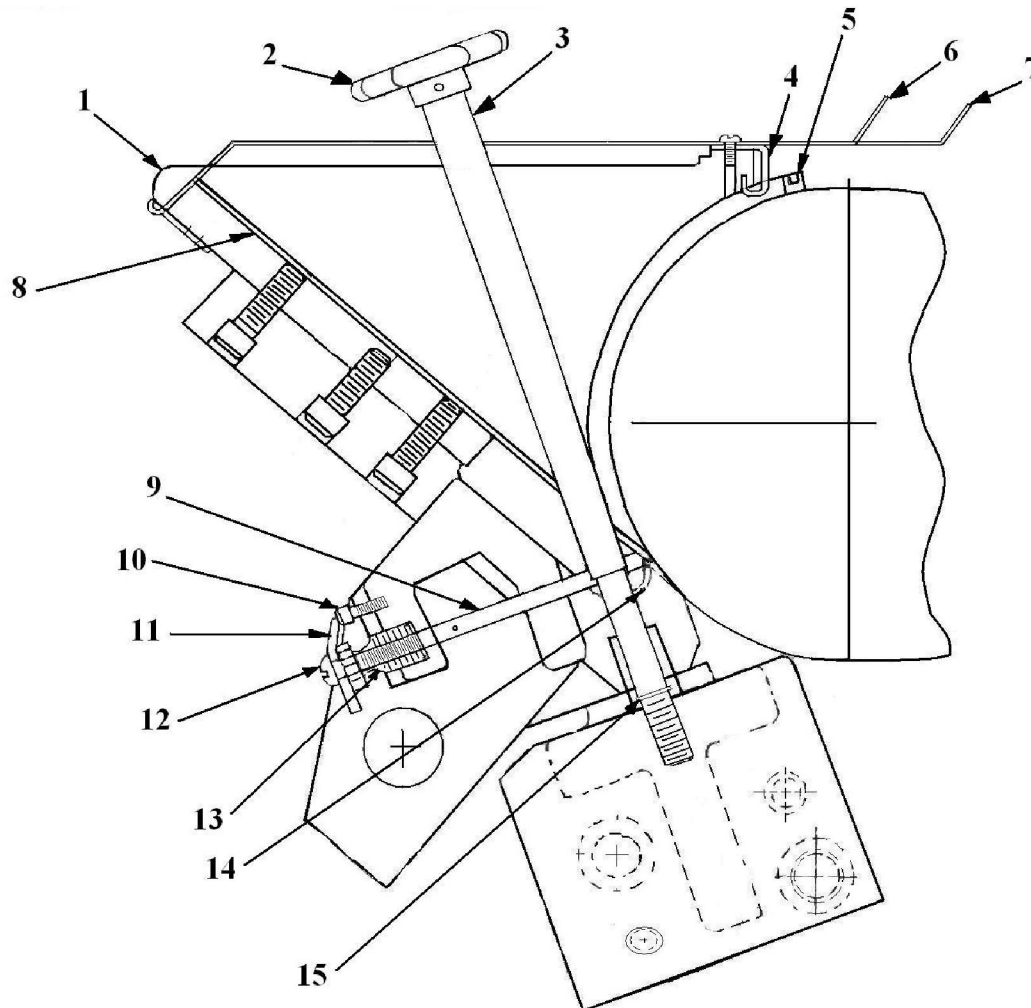
CGI 11-1	Screw End	CGI 11-14	Plate Screws
CGI 11-2	Shake proof Lockwasher	CGI 11-15	DR Side Bushing
CGI 11-3	End Washer	CGI 11-16	Oil Wiper
CGI 11-4	Key	CGI 11-17	Bushing Lockdown Bolt
CGI 11-5	Outside Dampener Gear	CGI 11-18	Washer Spacer
CGI 11-6	CAM Housing Bolt	CGI 11-19	Ret. Ring
CGI 11-7	Jam Nut	CGI 11-20	Dampener Vibrator Roller
CGI 11-8	CAM Follower Bearing	CGI 11-21	Spacer Ring
CGI 11-9	Inside Dampener Gear	CGI 11-22	Roller Socket
CGI 11-10	Spaner Lock Nut	CGI 11-23	Alimite FTG
CGI 11-11	Spaner Lockwasher	CGI 11-24	Bushing Screws
CGI 11-12	Bearing	CGI 11-25	OP Side Bushing
CGI 11-13	Bearing Retainer Plate		

Drive Shaft



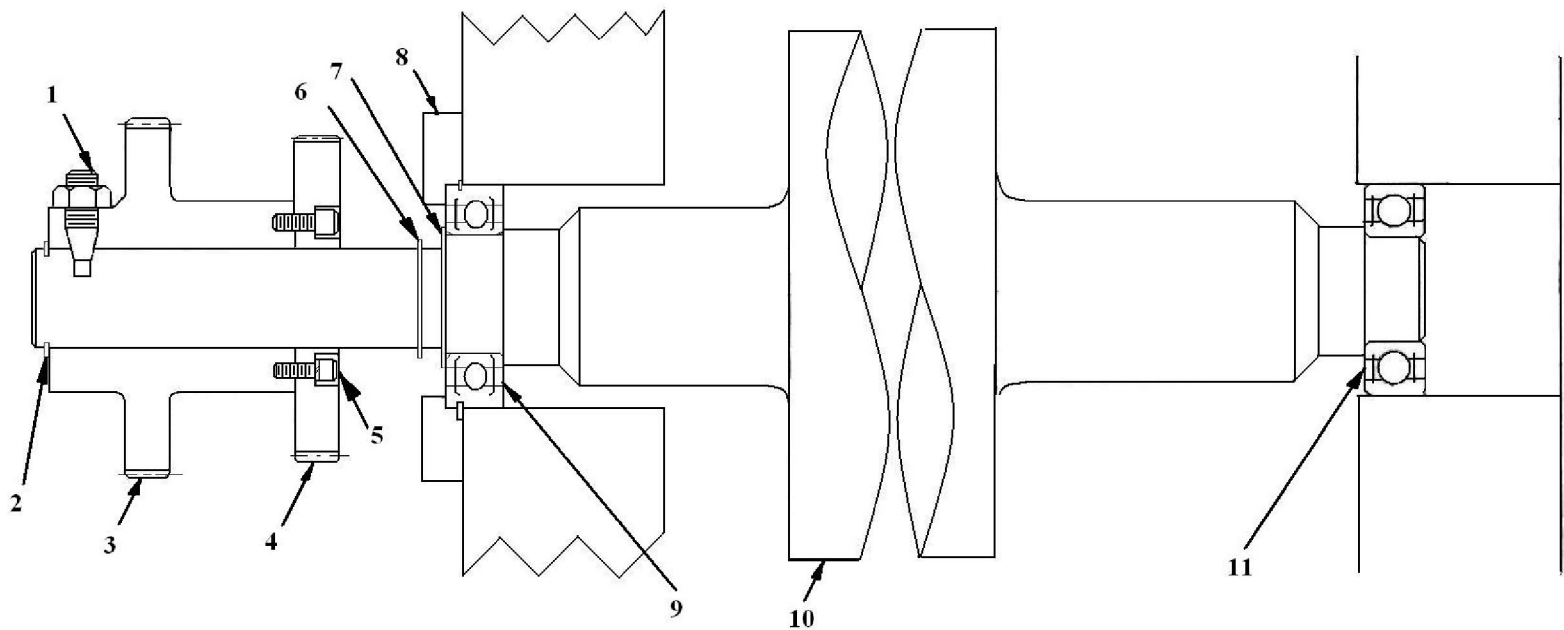
CGI 1-1	Key	CGI 1-15	End Bolt
CGI 1-2	Retainer Cap	CGI 1-16	End Cap
CGI 1-3	Bearing	CGI 1-17	Coupling
CGI 1-4	Key	CGI 1-18	Spacer
CGI 1-5	Drive Shaft	CGI 1-19	Oil Pump
CGI 1-6	Sprocket	CGI 1-20	Sprocket
CGI 1-7	Key	CGI 1-21	Chain
CGI 1-8	Bearing	CGI 1-22	Oil Filter
CGI 1-9	Bearing Housing	CGI 1-23	pinion Gear
CGI 1-10	Spacer	CGI 1-24	Spotting Set Screw
CGI 1-11	Shim	CGI 1-25	Jam Nut
CGI 1-12	Shim	CGI 1-26	Spacer
CGI 1-13	Retainer Cap	CGI 1-27	Coupling
CGI 1-14	Shim Pac		

Ink Fountain Assembly



CGI 3-1	Ink Fountain End	CGI 3-9	Inner ADJ Screw
CGI 3-2	Ink Fountain Handle	CGI 3-10	Stop Screw
CGI 3-3	Ink Fountain Rod	CGI 3-11	Pointer
CGI 3-4	Top Seal Clip	CGI 3-12	Lockdown Screw
CGI 3-5	Ink Fountain Seal w/ O-Ring	CGI 3-13	Outer Screw
CGI 3-6	Ink Fountain Cover	CGI 3-14	Lower Seal Clip
CGI 3-7	Ink Fountain Cover	CGI 3-15	Retaining Ring
CGI 3-8	Bar & Blade Assembly		

Ink Fountain Roller



CGI 4-1	Spotting Set Screw
CGI 4-2	Retaining Ring
CGI 4-3	Gear FTN Roller Low Speed
CGI 4-4	Gear FTN Roller High Speed
CGI 4-5	#10 High Collar Lock Washer
CGI 4-6	Retaining Ring
CGI 4-7	Retaining Ring
CGI 4-8	Retainer Cap
CGI 4-9	Bearing
CGI 4-10	Ink Fountain Roller
CGI 4-11	Bearing



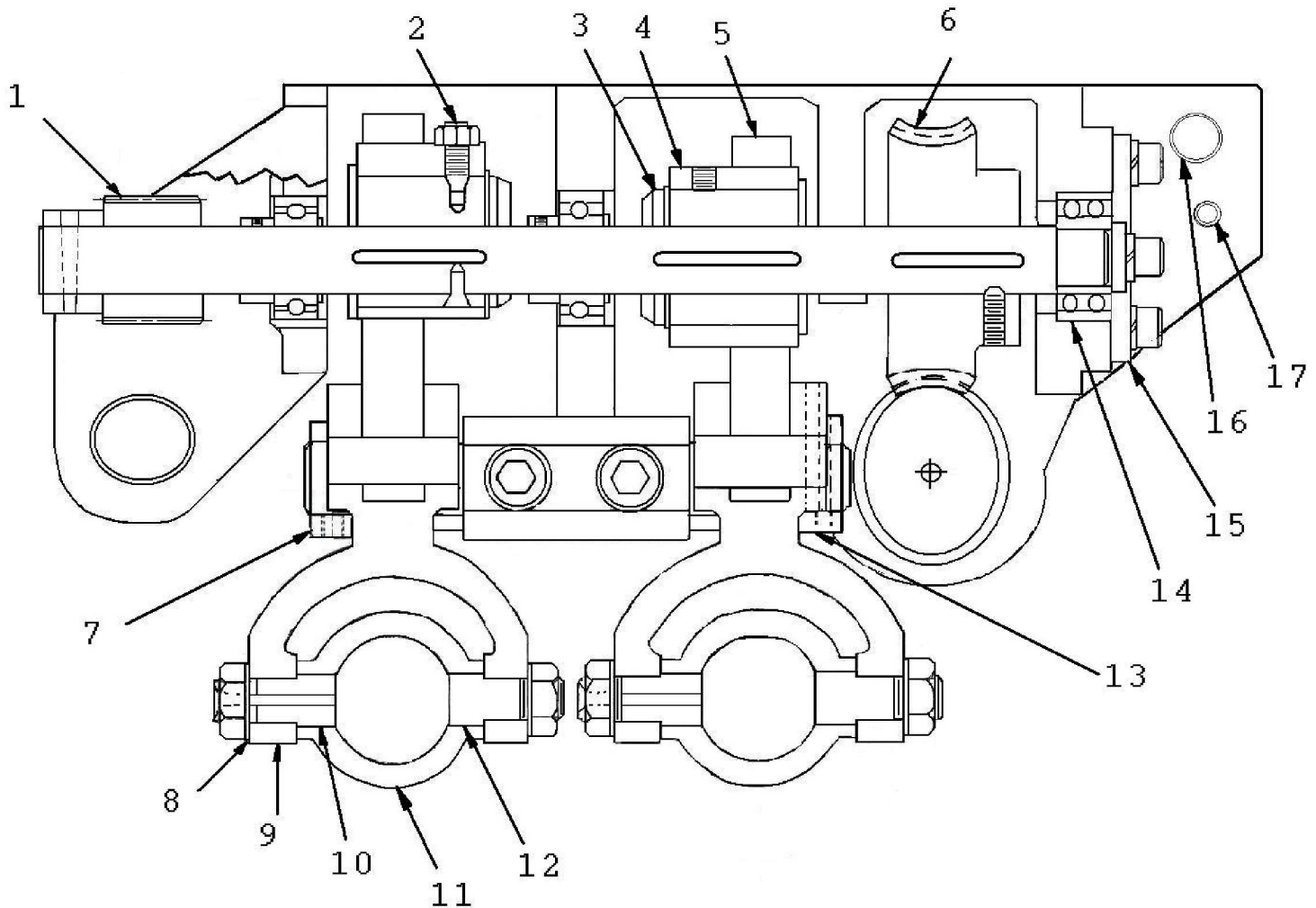
**CENTRAL
GRAPHICS inc.**

1-630-759-1696

**FAX 1-630-759-1792
Toll Free 1-800-284-7737**

1302 ENTERPRISE DRIVE, ROMEOVILLE, ILLINOIS 60446

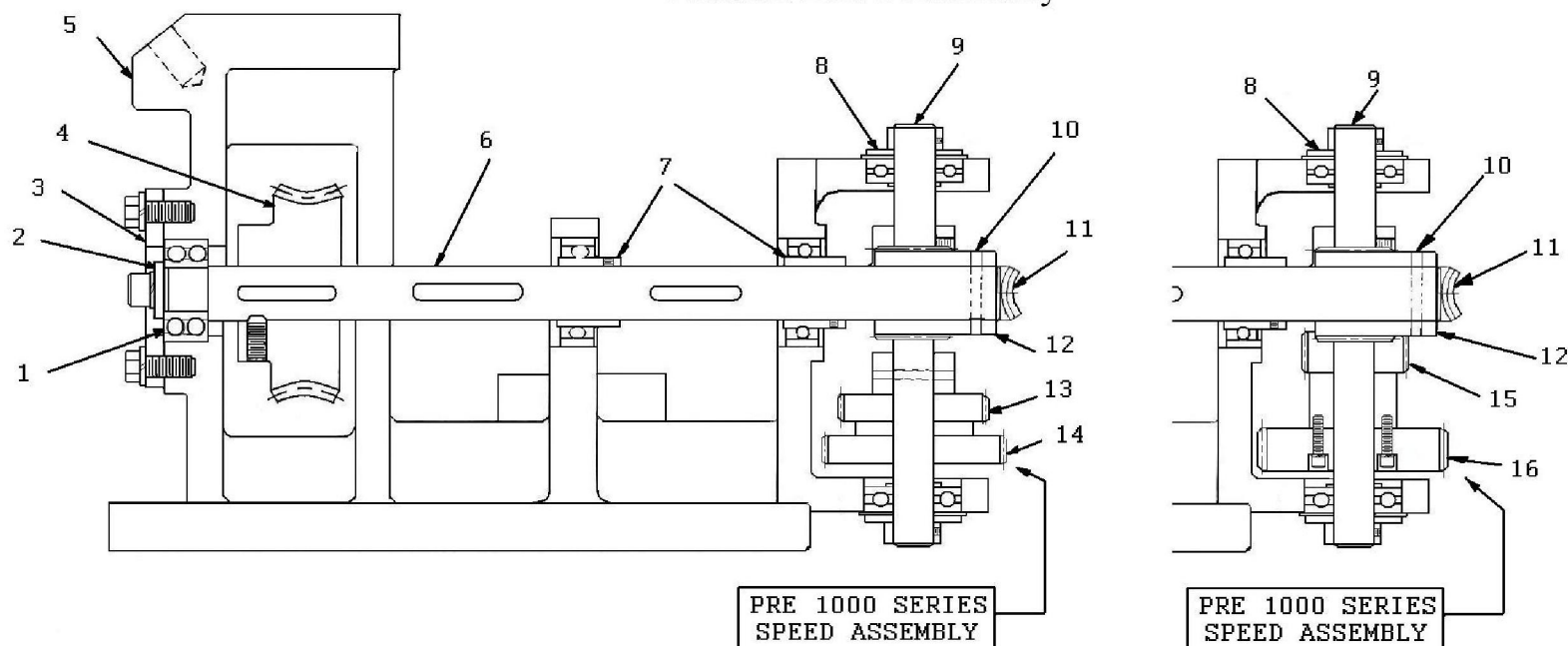
Ink Vibrator Assembly



CGI 13-1	Worm
CGI 13-2	Spotting Screw
CGI 13-3	Inner Eccentric
CGI 13-4	Outer Eccentric
CGI 13-5	Eccentric Lever
CGI 13-6	Worm Gear
CGI 13-7	Collar
CGI 13-8	Shake Proof Lockwasher
CGI 13-9	Lever Arm

CGI 13-10	Stud
CGI 13-11	Collar
CGI 13-12	Stud
CGI 13-13	Collar
CGI 13-14	BRG
CGI 13-15	End Plate
CGI 13-16	Mounting Bolt
CGI 13-17	Taper Pin

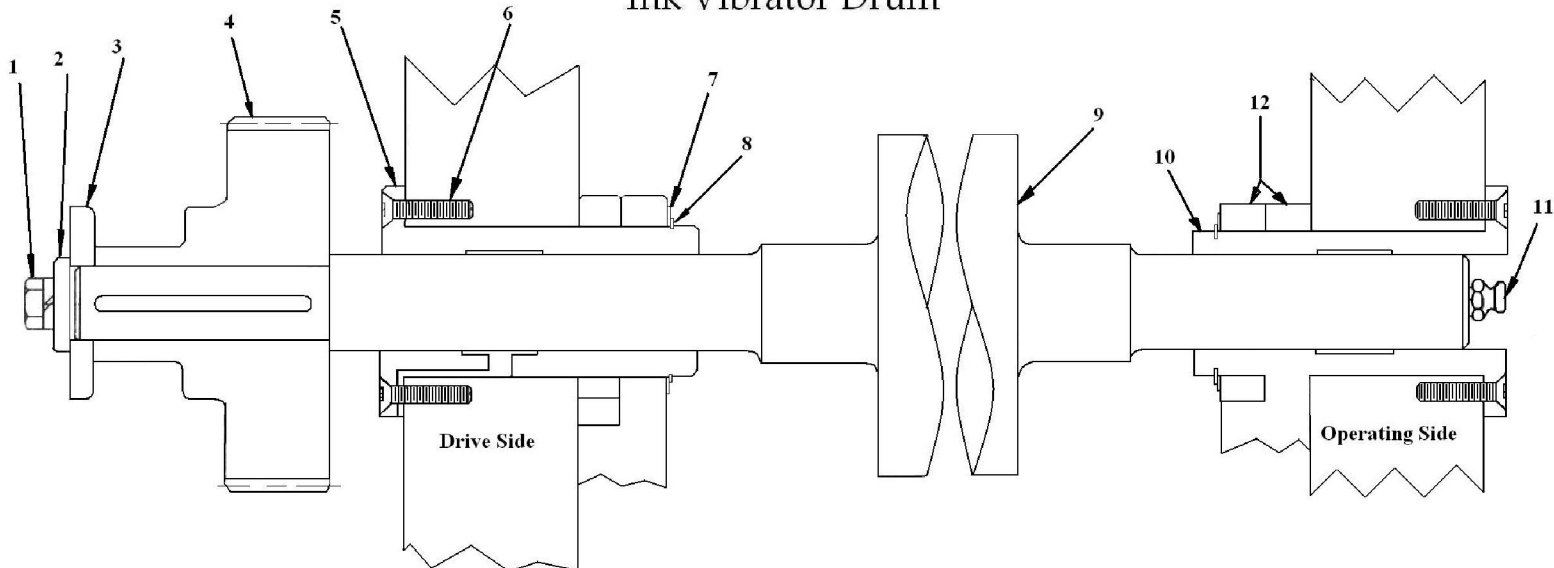
Vibrator Drive Assembly



CGI 14-1	Bearing
CGI 14-2	End Washer
CGI 14-3	End Plate
CGI 14-4	Gear
CGI 14-5	Vib HOUSING 10 or 13
CGI 14-6	Shaft
CGI 14-7	Bearing
CGI 14-8	Bearing

CGI 14-9	Jack Shaft
CGI 14-10	Taper Pin
CGI 14-11	Worm Gear
CGI 14-12	Worm
CGI 14-13	Gear
CGI 14-14	Gear
CGI 14-15	Gear
CGI 14-16	Gear

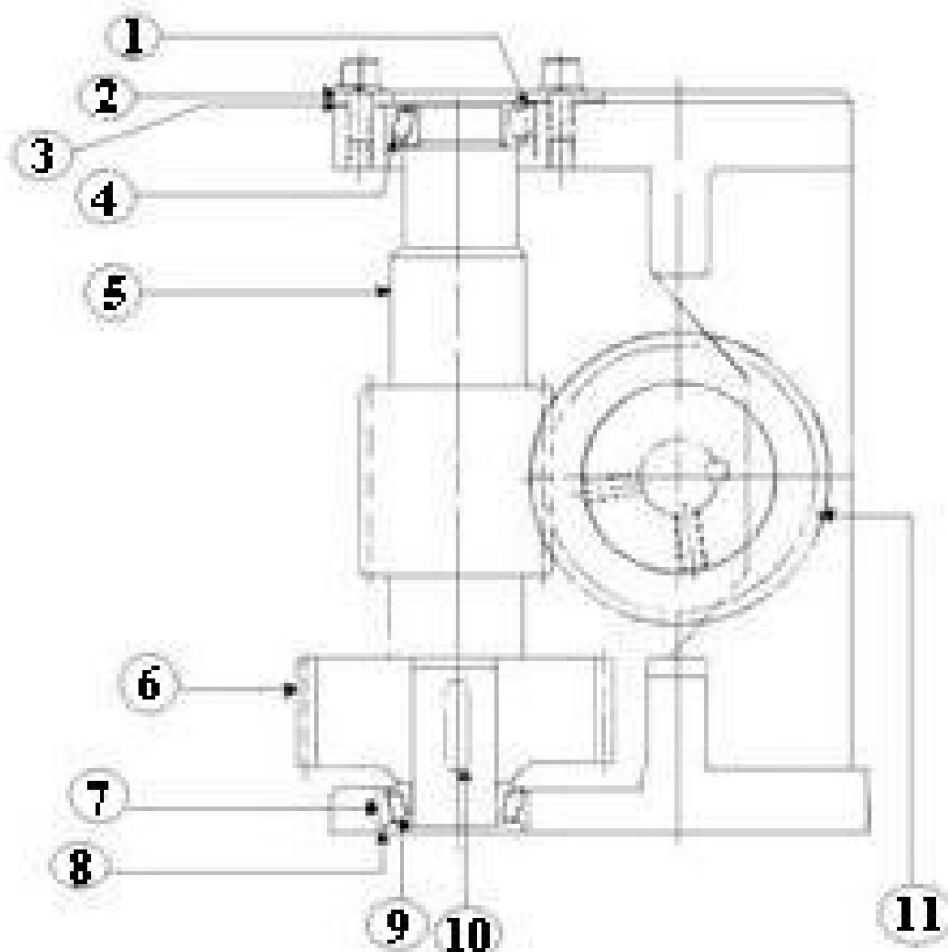
Ink Vibrator Drum



CGI 6-1 **Bolt & Lockwasher**
CGI 6-2 **End Washer**
CGI 6-3 **Thrust; Washer**
CGI 6-4 **Gear Vibrator Drive**
CGI 6-5 **Bushing D.R. Side**
CGI 6-6 **Flat Head Socket Screw**

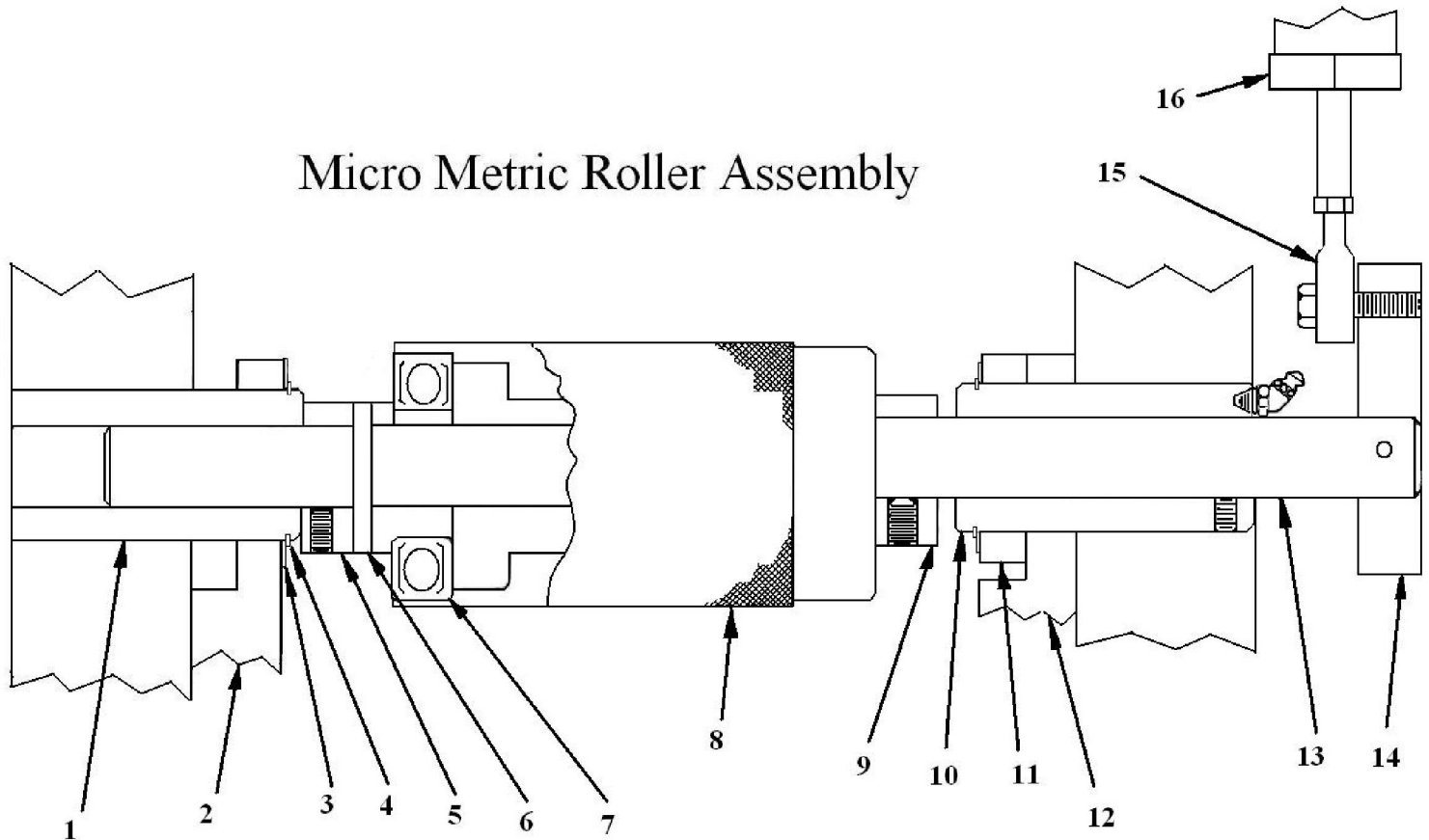
CGI 6-7 **Spacer Washer**
CGI 6-8 **Snap Ring**
CGI 6-9 **Reworked Ink Vibrator Roller**
CGI 6-10 **Bushing O.P.Side**
CGI 6-11 **Alimite FTG**
CGI 6-12 **Roller Socket**

Vibrator Worm Gear Assembly



CGI 15-1	Bearing Cup
CGI 15-2	End Plate
CGI 15-3	Shim Set
CGI 15-4	Bearing Cone
CGI 15-5	Worm Shaft
CGI 15-6	Spur Gear
CGI 15-7	Bearing Cup
CGI 15-8	Spacer
CGI 15-9	Bearing Cone
CGI 15-10	Key
CGI 15-11	Worm Gear

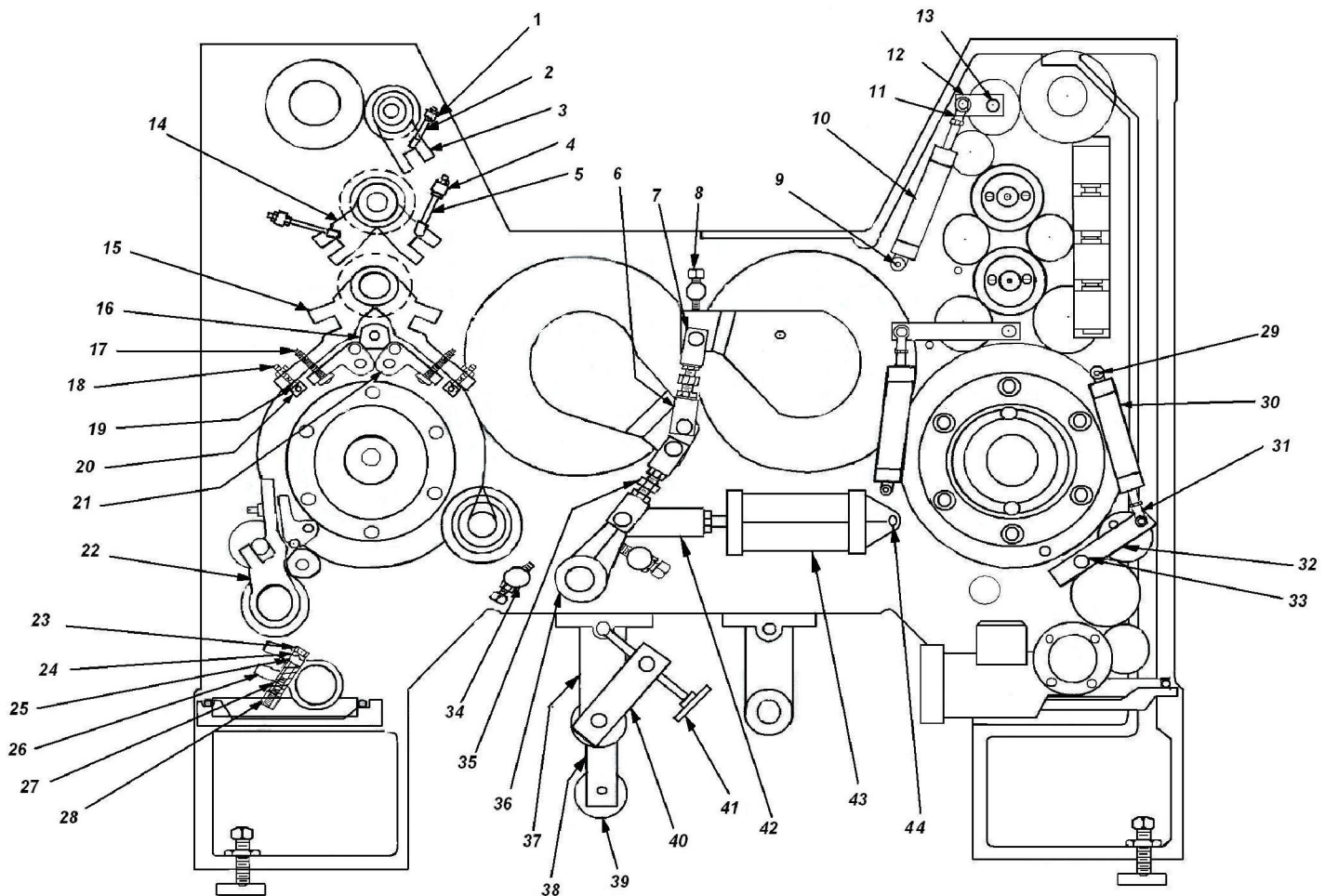
Micro Metric Roller Assembly



CGI 5-1	Bushing
CGI 5-2	Roller Socket
CGI 5-3	Washer Spacer
CGI 5-4	Snap Ring
CGI 5-5	Eccentric Slit Eccentric, pined
CGI 5-6	Roll Pin
CGI 5-7	Bearing
CGI 5-8	Micro Metric Roller

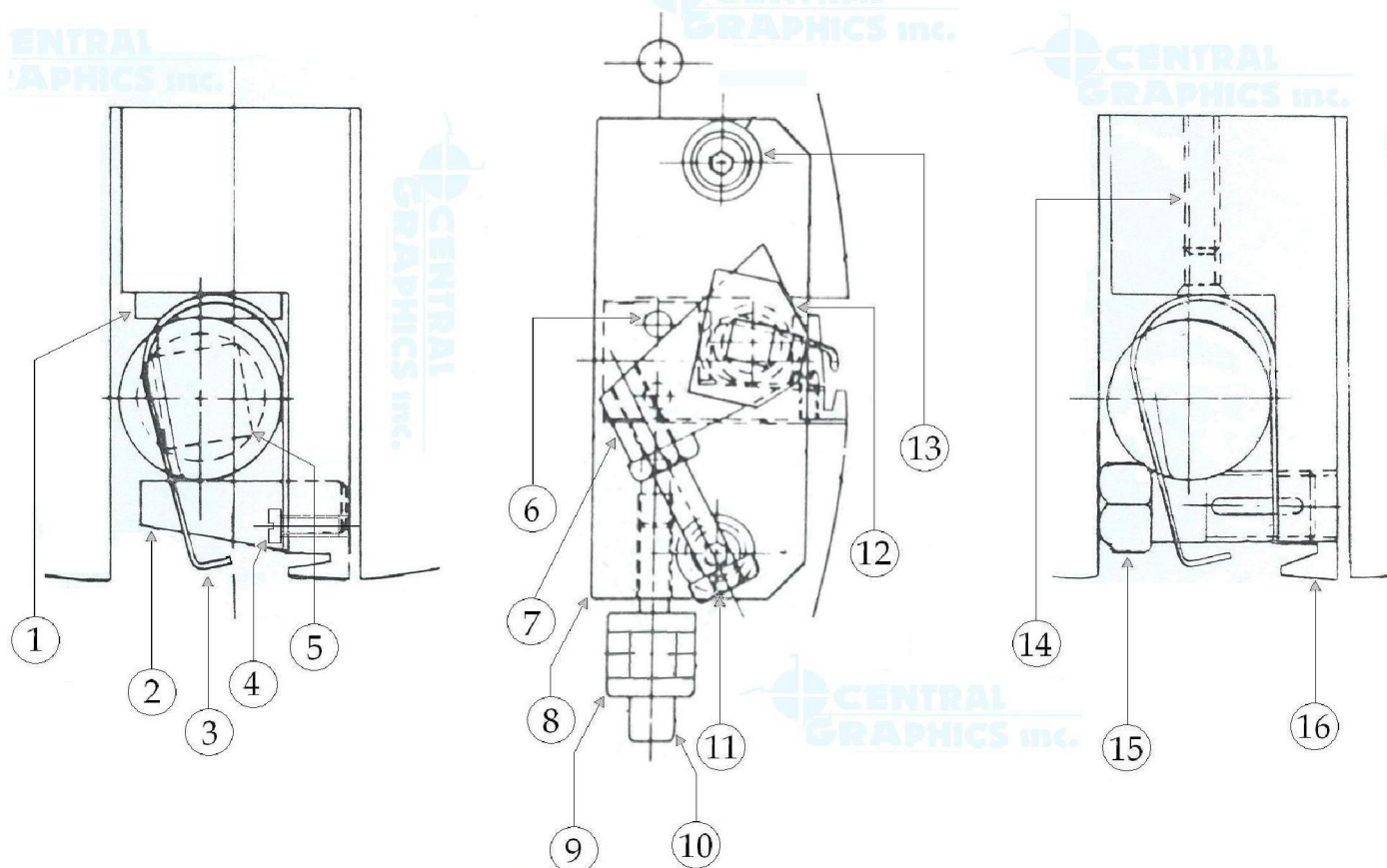
CGI 5-9	Eccentric
CGI 5-10	Bushing
CGI 5-11	Spacer Ring
CGI 5-12	Roller Socket
CGI 5-13	Micro Shaft
CGI 5-14	Throw Lever Arm
CGI 5-15	Heim Unibal
CGI 5-16	Air Cylinder

OPERATOR SIDE OF UNIT



CGI 2-1	Popet	CGI 2-15	Ink Form Socket	CGI 2-29	Stud
CGI 2-2	Swing Bolt	CGI 2-16	Throw CAM	CGI 2-30	Form Air Cyl
CGI 2-3	Ink Feed Socket	CGI 2-17	Form ADJ Screw	CGI 2-31	Heim Unibal
CGI 2-4	Popet	CGI 2-18	Anti Bounce Screw	CGI 2-32	Form Throw Lever
CGI 2-5	Swing Bolt	CGI 2-19	Anti Bounce Spring	CGI 2-33	Form Shaft
CGI 2-6	Throw Clevis	CGI 2-20	Spring Popet	CGI 2-34	Popet
CGI 2-7	Throw Clevis	CGI 2-21	Throw CAM Lever	CGI 2-35	Impression ADJ Screw
CGI 2-8	Stop Screw	CGI 2-22	Water Form Socket	CGI 2-36	Impression Throw Lever
CGI 2-9	Stud	CGI 2-23	ADJ Bolt	CGI 2-37	Comp Mount BKT
CGI 2-10	Micro Air Cyl	CGI 2-24	CAM Nut	CGI 2-38	Comp Swing BKT
CGI 2-11	Heim Unibal	CGI 2-25	Spring Popet	CGI 2-39	Comp Pipe Roller
CGI 2-12	Throw Lever	CGI 2-26	Water Feed Socket	CGI 2-40	Comp ADJ Lever
CGI 2-13	Throw Shaft	CGI 2-27	Spring	CGI 2-41	Comp Handle
CGI 2-14	Ink Tran. Socket	CGI 2-28	Popet	CGI 2-42	Main Impression Clevis
				CGI 2-43	Main Impression Air Cylinder
				CGI 2-44	Air Cylinder Stud

Plate Lockup Assembly



CGI 9-1	Shaft Support Plate	CGI 9-9	Register U Bolt
CGI 9-2	Side Pin	CGI 9-10	Register Screw
CGI 9-3	Plate Spring	CGI 9-11	Trip Screw
CGI 9-4	Spring Lockdown Screw	CGI 9-12	Sleeve
CGI 9-5	Shaft Support Plate	CGI 9-13	Stripper Bolt
CGI 9-6	Block Position Pin	CGI 9-14	Set Screw
CGI 9-7	Swivel Block Auto Kicker	CGI 9-15	Jack Screw
CGI 9-8	End Block	CGI 9-16	Lockup Yoke



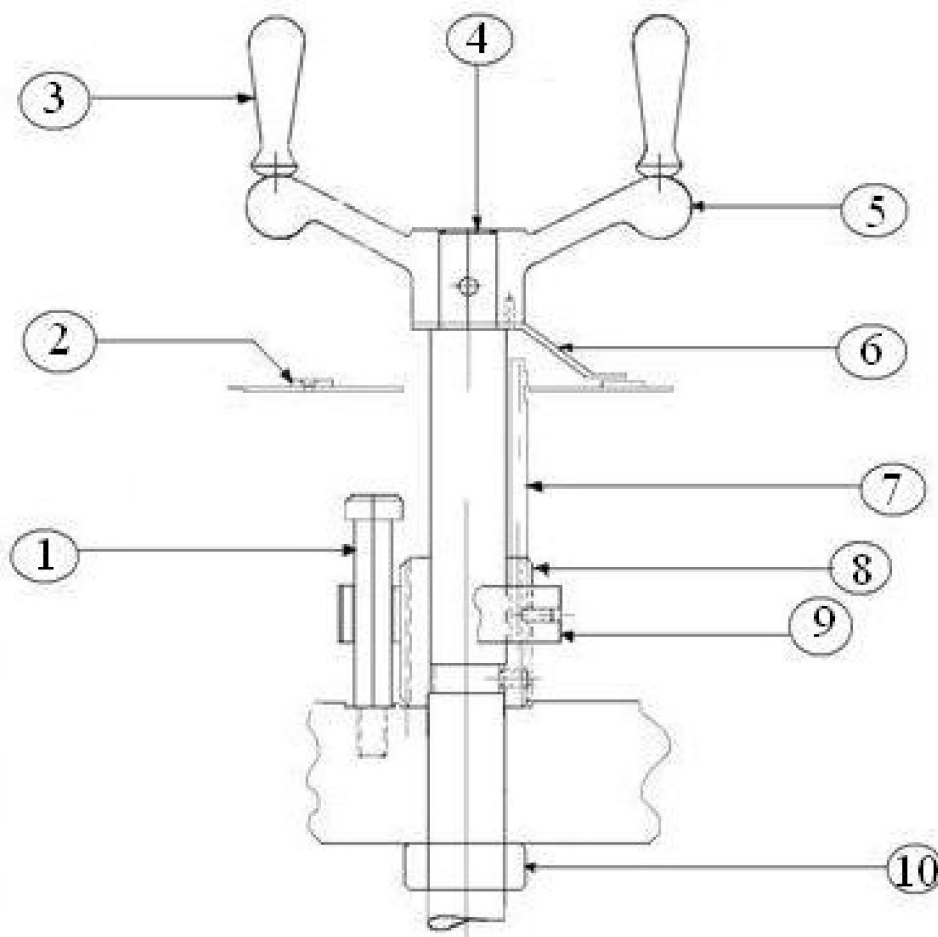
CENTRAL
GRAPHICS inc.

1-630-759-1696

FAX 1-630-759-1792
Toll Free 1-800-284-7737

1302 ENTERPRISE DRIVE, ROMEOVILLE, ILLINOIS 60446

Running Circumferential Assembly



CGI 16-1	1/2 x 1 1/2 SOC HD Stripper Bolt
CGI 16-2	Indicator Dial
CGI 16-3	HandWheel Knob
CGI 16-4	RCR Shaft
CGI 16-5	RCR HandWheel
CGI 16-6	Pointer
CGI 16-7	Rod Indicator
CGI 16-8	Worm Gear RCR
CGI 16-9	Indicator Nut Guide
CGI 16-10	Lock Collar

Urbanite Equipment Available “We can Do anything”—Central Graphics brings the first Urbanite Book



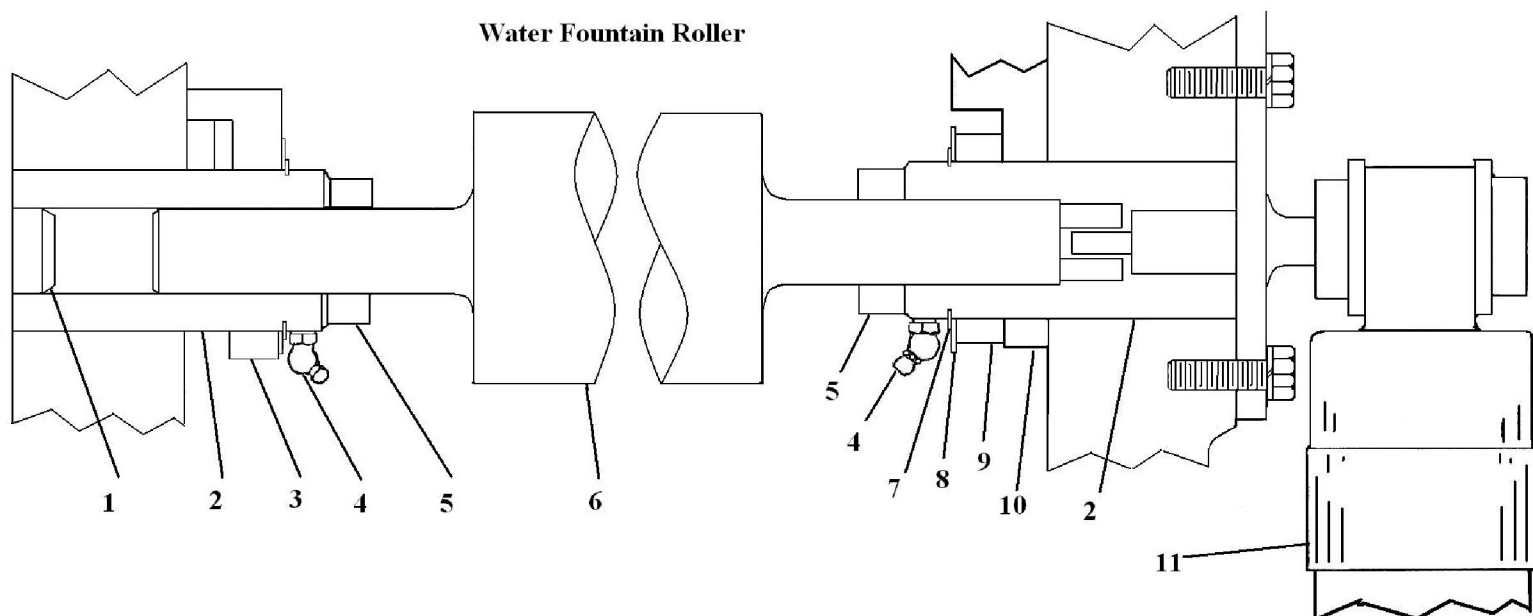
CENTRAL
GRAPHICS inc.

1-630-759-1696

FAX 1-630-759-1792
Toll Free 1-800-284-7737

1302 ENTERPRISE DRIVE, ROMEOVILLE, ILLINOIS 60446

Water Fountain Roller



CGI 12-1	Bushing Plug
CGI 12-2	Bushing
CGI 12-3	Roller Socket
CGI 12-4	Alimaite FTG
CGI 12-5	Lock Collar
CGI 12-6	Water Fountain Roller
CGI 12-7	Ret. Ring
CGI 12-8	Washer Spacer
CGI 12-9	Spacer Ring
CGI 12-10	Roller Socket
CGI 12-11	Dampener Motor

Home of Urbanite Printing Press Replacement Parts—Central Graphics brings the first Urbanite Book